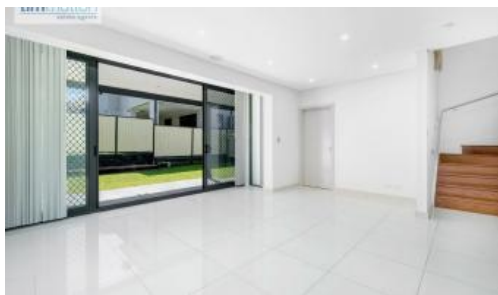


4 Joyce Ave, Picnic Point



STYLISH LIVING IN PICNIC POINT

This impressive 3 bedroom duplex showcases a bright modern interior. Situated on the high side of a cul de sac in the well sort after suburb of Picnic Point.

Features of the property include:-

- 3 spacious bedrooms, 2 with built in robes
- Main bedroom features walk in robe and luxurious ensuite
- Main bathroom with separate bath
- Open plan living leading out to a low maintenance grassed courtyard with undercover entertaining
- Kitchen boasting plenty of cupboard space
- Internal laundry
- Reverse cycle ducted air conditioning
- Lock up garage with remote control door
- Alarm System

A stylish home only 2 minutes drive to Picnic Point High School, Picnic Point Public School, Picnic Point Shops and public reserves.

The above information provided has been furnished to us by the vendor/s. We have not verified whether or not that information is accurate and do not have any belief in one way or the other in its accuracy. We do not accept any responsibility to any person for its accuracy and do no more than pass it on. All interested parties should make and rely upon their own inquiries in order to determine whether or not this information is in fact accurate.

3 2 1

Price

APPLICATION APPROVED |
INSPECTION CANCELLED

**Property
Type**

Rental

**Property
ID**

398

AGENT DETAILS

Michelle Austin - 02 9772 0277

OFFICE DETAILS

Panania

0297720277

tim mutton
estate agents