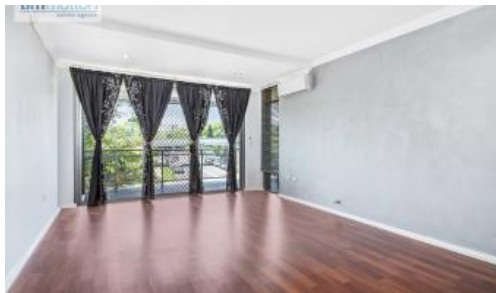




Unit 1, 9-11 Samuel St, Lidcombe



## PRIME LOCATION

Conveniently located a short 5 minute walk to Lidcombe Train Station, also close to schools, University of Sydney (Cumberland Campus) & Tafe NSW. Easy Access to M4, Lidcombe Shopping Centre and Costco

Features of this modern first floor apartment include;

- 3 generous sized bedrooms, all with built in wardrobes
- Main bedroom includes ensuite
- Modern kitchen with gas cooktop
- Open plan living opening onto large balcony
- Split System Air Conditioning
- Floor boards throughout
- 2 car spaces (tandem) within secure lock up garage
- Secure building

The above information provided has been furnished to us by the vendor/s. We have not verified whether or not that information is accurate and do not have any belief in one way or the other in its accuracy. We do not accept any responsibility to any person for its accuracy and do no more than pass it on. All interested parties should make and rely upon their own inquiries in order to determine whether or not this information is in fact accurate.

3 2 2

Price

APPLICATION APPROVED |  
DEPOSIT RECEIVED

Property  
Type Rental

Property  
ID 246

## AGENT DETAILS

Michelle Austin - 02 9772 0277

## OFFICE DETAILS

Panania  
0297720277

**tim mutton**  
estate agents